



PERRY ELLIS



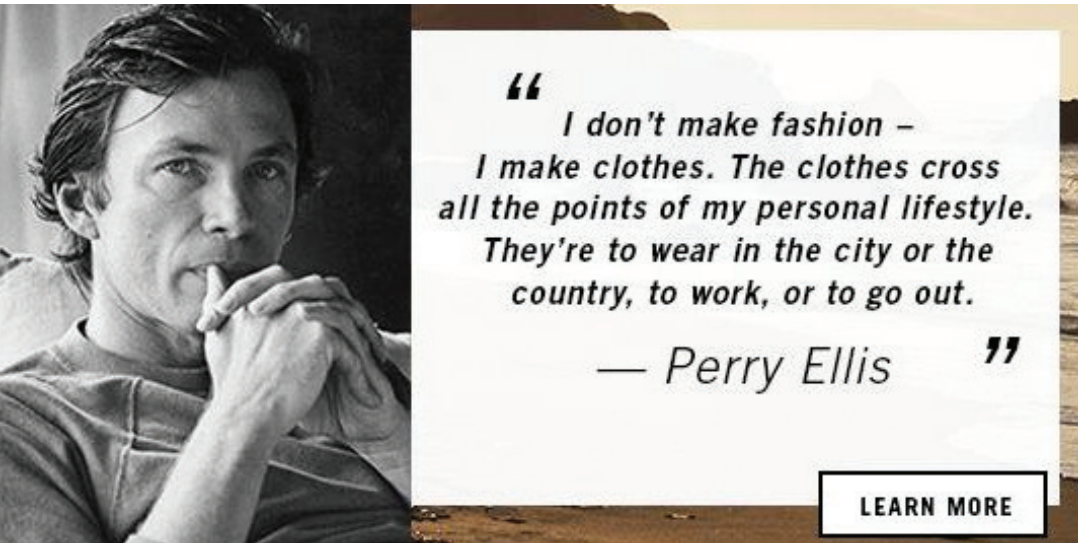
PERRY ELLIS
INTERNATIONAL
CORPORATE SALES DIVISION

2017

APPAREL

PERRY ELLIS





PG

2

PEM103
PEW107

Heathered Woven Shirt

PEM103X

Big & Tall Heathered Woven Shirt

4

PEM102

Mini Grid Woven Shirt

6

PEM104
PEW108

1/4-Zip Pullover

8

PEM101
PEW106

Space Dye Polo

10

PEM100
PEW105

Classic Polo



Heathered Woven Shirt

P E R R Y E L L I S

AVAILABLE
JULY 2021



Due to the uniqueness of garment fabric, color shades will vary.

* Prices apply to sizes S – XL.
Please inquire for pricing on larger sizes.

MEN'S
PEM103

LADIES
PEW107

MSRP* \$59.00

MEN'S BIG & TALL
PEM103X

MSRP* \$69.00

3.5 oz

58% COTTON, 37% POLYESTER,
5% ELASTANE

MEN'S SIZES: S - 4XL

MEN'S BIG & TALL SIZES:
LT, XLT, 2XLT & 3XLT

LADIES SIZES: S - XXXL

039 QUIET SHADE



002 CAVIAR SLATE



459 CLASSIC NAVY



447 LITTLE BOY BLUE

Heathered Woven Shirt

- Left chest pocket
- 8-button front, button down collar
- Adjustable cuff, rounded hem
- Contrast Perry Ellis woven label inside lower placket

Ladies Heathered Woven Shirt

- Long sleeve converts to 3/4-sleeve
- 6-button front, rounded hem
- Buttoned cuff
- Foldover tab button converts to 3/4 sleeve
- Contrast Perry Ellis woven label inside lower placket

Mini Grid Woven Shirt

AVAILABLE
JULY 2021

456 PROVENCE BLUE / WHITE

039 QUIET SHADE / WHITE

459 CLASSIC NAVY / WHITE

- Left chest pocket
- 8-button front, button down collar
- Adjustable cuff, rounded hem
- Performance stretch fabric
- Contrast Perry Ellis woven label inside lower placket

PERRY ELLIS



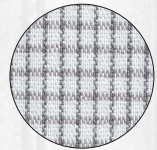
MEN'S
PEM102

MSRP* \$59.00

3.1 oz

66% COTTON,
30% POLYESTER,
4% ELASTANE YARN DYED
MINI GRID FABRIC

MEN'S SIZES: S - 4XL



* Prices apply to sizes S - XL.
Please inquire for pricing on larger sizes.

1/4-Zip Pullover

AVAILABLE
JULY 2021



074 GREY HEATHER



CONTRAST
LOGO PATCH
ON BACK NECK



910 PEACOCK NAVY HEATHER

Men's 1/4 Zip Pullover

- Water-repellent finish ▪ UPF 50+ protection technology protects your skin from the sun's harmful rays
- Enhanced stretch technology with innovative seams to redefine range of motion ▪ **Contrast Perry Ellis patch on back neck**

Ladies 1/4 Zip Pullover

- Water-repellent finish ▪ UPF 50+ protection technology protects your skin from the sun's harmful rays
- Enhanced stretch technology with innovative seams to redefine range of motion ▪ **Contrast Perry Ellis patch on back neck**

PERRY ELLIS

MEN'S
PEM104

LADIES
PEW108

MSRP* \$62.00

5.6 oz

88% POLYESTER, 12% SPANDEX
JERSEY INTERLOCK FABRIC

MEN'S: S - 4XL

LADIES SIZES: S - XXXL



* Prices apply to sizes S - XL.
Please inquire for pricing
on larger sizes.

Space Dye Polo

PERRY ELLIS

AVAILABLE
JULY 2021



Due to the uniqueness of garment fabric, color shades will vary.

* Prices apply to sizes S – XL.
Please inquire for pricing on larger sizes.

MEN'S
PEM101

LADIES
PEW106

MSRP* \$46.00

5.0 OZ

100% POLYESTER
SINGLE KNIT FABRIC

MEN'S SIZES: S - 4XL
LADIES SIZES: S - XXXL



002 CAVIAR BLACK

430 CROWN BLUE

031 TRADEWINDS

636 GOJI BERRY

Men's Space Dye Polo

- Moisture wicking fabric draws perspiration away from the skin
- UPF 25 protection technology protects your skin from the sun's harmful rays
- Enhanced stretch technology with innovative seams to redefine range of motion
- 3-button placket, self fabric collar, open sleeve
- Double needle hemmed bottom with side vents
- **Contrast Perry Ellis woven label on bottom left front**

Ladies Space Dye Polo

- Moisture wicking fabric draws perspiration away from the skin
- UPF 25 protection technology protects your skin from the sun's harmful rays
- Enhanced stretch technology with innovative seams to redefine range of motion
- Self-fabric collar, open placket, feminine ruching shoulder detail
- Double needle hemmed bottom with side vents
- **Contrast Perry Ellis woven label on bottom left front**

Classic Polo

P E R R Y E L L I S

AVAILABLE
JULY 2021



* Prices apply to sizes S – XL.
Please inquire for pricing on
larger sizes.

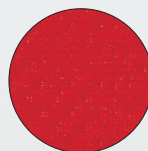
MEN'S
PEM100LADIES
PEW105

MSRP* \$38.00

5.0 OZ100% POLYESTER
DOUBLE KNIT FABRIC

MEN'S SIZES: S - 4XL

LADIES SIZES: S - XXXL



002 CAVIAR BLACK

424 PEACOCK NAVY

100 BRIGHT WHITE

041 SMOKED PEARL

989 DIRECTOIRE BLUE

610 SALSA RED

Men's Classic Polo

- Moisture wicking fabric draws perspiration away from the skin ■ UPF 50+ protection technology protects your skin from the sun's harmful rays
 - Enhanced stretch technology with innovative seams to redefine range of motion ■ 3-button placket, self fabric collar, open sleeve
 - Double needle hemmed bottom with side vents ■ **Contrast Perry Ellis woven label on bottom left front**

Ladies Classic Polo

- Moisture wicking fabric draws perspiration away from the skin ■ UPF 50+ protection technology protects your skin from the sun's harmful rays
 - Enhanced stretch technology with innovative seams to redefine range of motion ■ 5-button placket, self fabric collar, open sleeve
 - Rounded hem ■ **Contrast Perry Ellis woven label on bottom left front**



an original
Penguin[®]
BY
Munsingwear





PG

14

OGKBA001
OGKBA002

Oxford Polo

16

OGKSA099
OGKSA092

Golf Earl Polo

18

OGKSA035
 Birdseye Block Polo

20

OGKSA0A0
 Intarsia Heathered Polo

22

OGKSA025
 Geometric Polo

24

OGKSA049
OGKSB222
 Clubhouse Mock Pullover

26

OGKSA030
 Unisex Birdseye
 Track Jacket

28

Perry Health

29

Men's & Ladies
 Fit Guides



NEW
MEN'S OXFORD POLO

- Moisture Wicking
- 3-button placket, self fabric collar, open sleeve
- Double needle hemmed bottom with side vents
- **Contrast embroidered Pete logo on right sleeve**

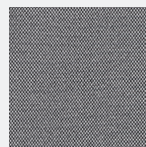
AVAILABLE
 MAY 2021



MEN'S
OGKBA001
 LADIES
OGKBA002
 MSRP* \$58.00

4.9 OZ. 70% POLYESTER
 30% RECYCLED POLYESTER
 JACQUARD SOFT TOUCH
 DOUBLE KNIT FABRIC

MEN'S SIZES: S - 4XL
 LADIES SIZES: S-XXXL



NEW
LADIES OXFORD POLO

- Moisture Wicking
- 4-button placket, self fabric collar, open sleeve
- Rounded bottom with double needle stitching and side vents
- **Contrast embroidered Pete logo on back neck**

* Prices apply to sizes XS - XL.
 Please inquire for pricing on larger sizes.





Black Iris Blue 417



High Risk Red 620



Regatta Blue 477



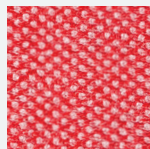
Bright White 118



Asphalt 085

GOLF EARL POLO

- Moisture wicking
- Contrast piping on collar, placket and cuffs
- Left chest pocket
- 3-button placket, self fabric collar, open sleeve
- Double needle hemmed bottom with side vents
- Contrast embroidered Pete logo on pocket



LADIES GOLF EARL POLO

- Moisture wicking
- Contrast tipping on collar, placket and cuffs
- 5-button placket, self fabric collar, open sleeve
- Double needle hemmed bottom with side vents
- Contrast embroidered Pete logo on back neck



Caribbean Sea 444



Caviar Black 001

MEN'S
OGKSA099

LADIES
OGKSA092

MSRP* \$62.00

4.0 OZ. 100% POLYESTER
HIGH GAUGE DOUBLE
KNIT FABRIC

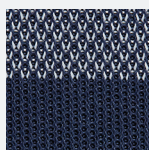
MEN'S SIZES: S-4XL
LADIES SIZES: S-XXXL



* Prices apply
to sizes S - XL.
Please inquire
for pricing on
larger sizes.

BIRDSEYE BLOCK POLO

- Moisture wicking
- Air Texturized Yarn
- 3-button placket, self fabric collar, open sleeve
- Engineered birdseye block on front, back panels and sleeves
- Double needle hemmed bottom with side vents
- Contrast embroidered Pete logo on left chest



Caviar Black 001



Black Iris Blue 417





an original
Penguin
BY
Munsingwear

MEN'S
OGKSAØ35

MSRP* \$74.00

4.9 OZ. 100% POLYESTER
JACQUARD SOFT TOUCH
DOUBLE KNIT FABRIC

MEN'S SIZES: S-4XL



* Prices apply to sizes S - XL.
Please inquire for pricing on
larger sizes.



* Prices apply to sizes S - XL.
Please inquire for pricing on
larger sizes.

MEN'S
OGKSAØAØ

MSRP* \$74.00

4.9 OZ. 100% POLYESTER
JACQUARD SOFT TOUCH
DOUBLE KNIT FABRIC

MEN'S SIZES: S-4XL



High Risk Red Heather 621



INTARSIA HEATHERED POLO

- Moisture wicking
- Air Texturized Yarn
- 3-button placket, open sleeve
- Rib knit collar with back neck Intarsia detail
- Double needle hemmed bottom with side vents
- **Contrast embroidered Pete logo on right sleeve**



Black Iris Blue Heather 411



Asphalt Heather 067



Black Caviar Heather 006



MEN'S
OGKSAØ25

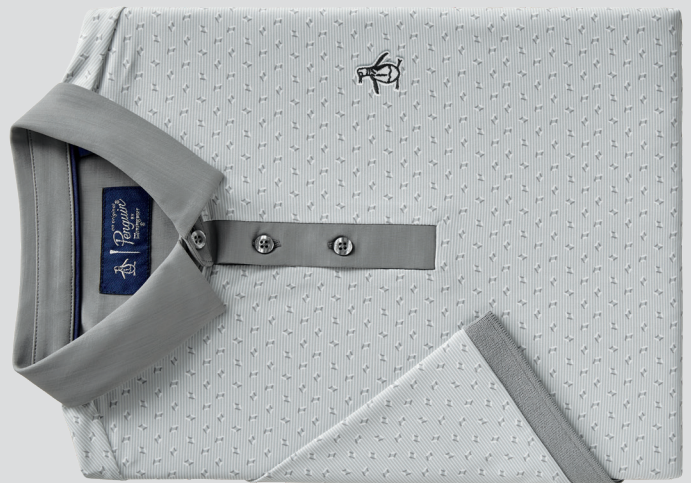
MSRP* \$74.00

5.3 OZ. 86% POLYESTER,
14% SPANDEX
HIGH GAUGE FABRIC

MEN'S SIZES: S-4XL



Caribbean Sea 444



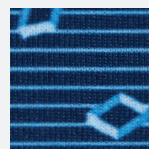
Pearl Blue 059



Black Iris Blue 417

GEOMETRIC POLO

- Moisture wicking
- 3-button placket, self fabric collar, knit cuff
- Double needle hemmed bottom with side vents
- **Contrast embroidered "Sticker Pete" logo on left chest**



* Prices apply to sizes S - XL.
Please inquire for pricing on
larger sizes.

**NEW LADIES CLUBHOUSE
MOCK PULLOVER**

- 1/4-zip with contrast tipping around zipper
- 1x1 rib knit inside mock neck
- Contrast embroidered Pete logo on front left collar

**MEN'S CLUBHOUSE
MOCK PULLOVER**

- 1/4-zip with contrast tipping around zipper
- 1x1 rib knit inside mock neck
- Contrast embroidered Pete logo on front left collar

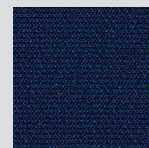
LADIES
AVAILABLE
MAY 2021

Caviar Black 001



Pearl Blue 059

Black Iris Blue 417



MEN'S
OGKSA049

LADIES
OGKSB222

MSRP* \$100.00

7.8 OZ. 90% POLYESTER
10% SPANDEX
HIGH GAUGE FLEECE

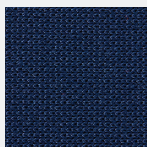
MEN'S SIZES: XS-4XL
LADIES SIZES: S-XXXL



* Prices apply
to sizes S - XL.
Please inquire
for pricing on
larger sizes.



Black Iris Blue 417



**UNISEX BIRDSEYE
TRACK JACKET**

- Birdseye double knit rib collar, cuffs and bottom hem
- Two front pockets with zipper closure
- Contrast piping on sleeves
- Contrast Original Penguin patch logo on left chest

UNISEX
OGKSA030

MSRP* \$110.00

5.9 OZ. 100%
POLYESTER FLEECE

UNISEX SIZES: XS-4XL

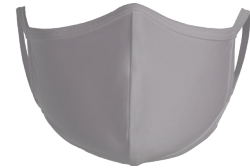
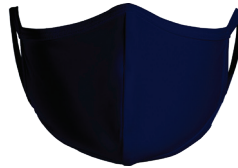


* Prices apply to sizes XS - XL.
Please inquire for pricing on
larger sizes.

PROTECTIVE KNIT FACE MASK
HEKM0001

Our non-medical solid face masks are lightweight and breathable thanks to the jersey fabrication and have a hint of stretch for comfort. They are designed to fit over the top of the nose and below the chin. Washable and reusable, you can wear them time and time again.

- Exterior 95% Polyester / 5% Spandex
- Lining 60% Cotton/ 40% Polyester
- Lightweight and Soft
- Stretch
- Washable and Reusable
- One Size Fits Most

001
Caviar Black039
Quiet Shade410
Peacoat Navy100
White

ONE SIZE
MSRP : PRICING
AVAILABLE
UPON REQUEST

HAND SANITIZER GEL

SMALL HAND SANITIZER GEL
2 FL. OZ. (60ml)

HEHS0060, HEHSA060

- **Registrations: FDA**
- **Product Details:**
Effective disinfection reached 99.9% (70% Ethyl Alcohol)
- 192 pieces per carton
- **Carton Dimensions:**
19" x 12" x 9"
(Weight: 33 lbs.)

MEDIUM HAND SANITIZER GEL
8.5 FL. OZ. (250ml)

HEHS0250, HEHSA250

- **Registrations: FDA**
- **Product Details:**
Effective disinfection reached 99.9% (70% Ethyl Alcohol)
- 48 pieces per carton
- **Carton Dimensions:**
16.62" x 9.13" x 13.89"
(Weight: 30 lbs.)

LARGE HAND SANITIZER GEL
17 FL. OZ. (500ml)

HEHS0500, HEHSA500

- **Registrations: FDA**
- **Product Details:**
Effective disinfection reached 99.9% (70% Ethyl Alcohol)
- 24 pieces per carton
- **Carton Dimensions:**
20.67" x 13.78" x 6.69"
(Weight 26.5 lbs.)

COLOR CLEAR 001
MSRP : PRICING AVAILABLE UPON REQUEST

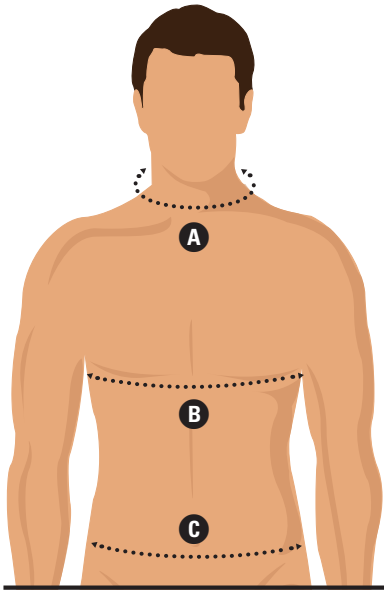
COLOR CLEAR 001
MSRP : PRICING AVAILABLE UPON REQUEST

COLOR CLEAR 001
MSRP : PRICING AVAILABLE UPON REQUEST

PERRY ELLIS IS A **TAILORED FIT**.
ORIGINAL PENGUIN IS A **TAILORED FIT**.

MEN'S & LADIES FIT GUIDE

SIZES ARE BASED ON
YOUR ACTUAL NUDE
BODY MEASUREMENTS



Neck

Measure at bottom around entire neck.

Chest Width

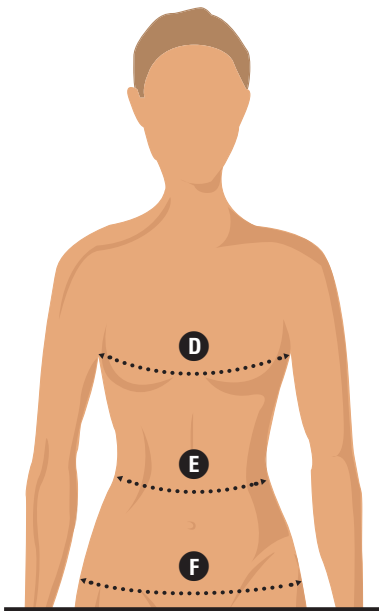
Measure 1" below armpit around entire torso.

Waist

Measure around your waist at the narrowest part of your torso.

MEN'S

Shirts Sizes [†]	A Neck	B Chest Width	C Waist	Shorts & Pants Waist Sizes
S	14½ - 15	36 - 38	28 - 30	28 - 30
M	15½ - 16	39 - 41	32 - 34	32 - 34
L	16½ - 17	42 - 44	36 - 38	36 - 38
XL	17½ - 18	45 - 47	40 - 42	40 - 42
XXL	18½ - 19	48 - 50	44 - 46	44 - 46
XXXL	19½ - 20	51 - 53	48 - 50	
4XL	20½ - 21	54 - 56	52 - 54	



Bust

With your arms relaxed at your side, measure the bust line at the fullest part of your chest.

Waist

Measure around your torso at the smallest part of your waist.

Hips

Wrap a measuring tape around your body at the fullest part of your bottom.

LADIES

Size [†]	Number Size	D Bust	E Waist	F Hips
XS	2	33	25⅜	35⅞
S	4 - 6	34⅛ - 35¼	26⅞ - 27	37⅞ - 38¼
M	8 - 10	36¼ - 37¼	28 - 29	39¼ - 40¼
L	12 - 14	38¾ - 40¾	30¾ - 32½	41¾ - 43¼
XL	16	42 - 43	33½ - 35	45 - 47
XXL	18	44	37 - 38	47 - 48
XXXL	20	46	40 - 42	48 - 52

an original
Penguin
by
Munsingwear

ASI 77715
PPAI 255232
SAGE 68787



An Original Penguin by Munsingwear® and the Penguin logo are trademarks of PEI Licensing, LLC or its affiliates. ©2021 PEI Licensing, LLC. All rights reserved.

PERRY ELLIS



PERRY ELLIS
INTERNATIONAL
CORPORATE SALES DIVISION

Perry Ellis is a trademark of PEI Licensing, LLC or its affiliates. ©2021 PEI Licensing, LLC. All rights reserved.